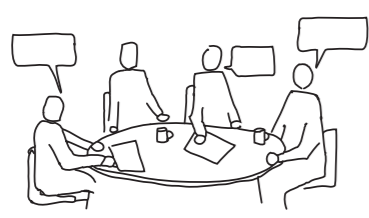


# 'OLDER PEOPLE SHOULDN'T HAVE TO LIVE IN TINY BOXES'

## Design for downsizing: The participatory design research process

### Initial data gathering



#### GROUP DISCUSSIONS

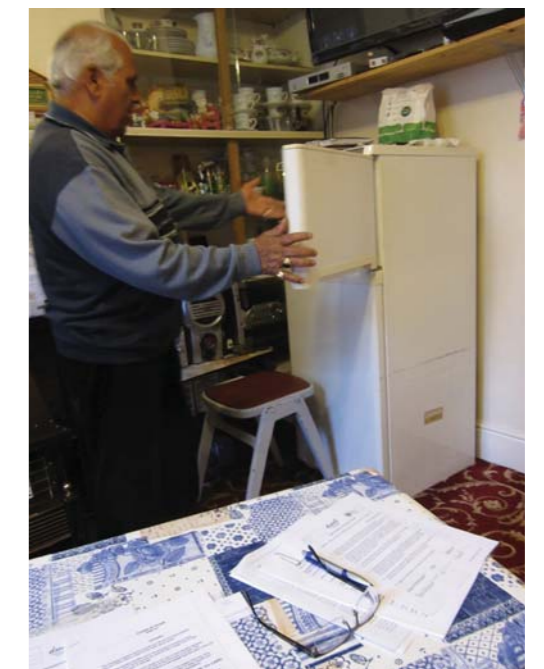
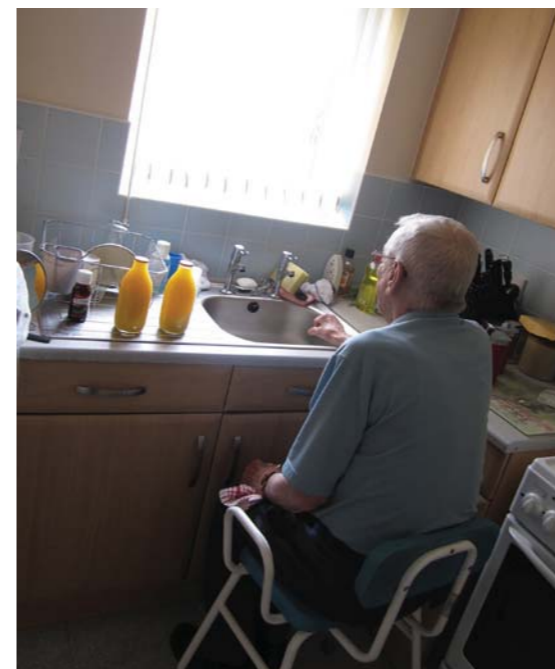
DWELL participants began by taking part in broad group discussions with the researchers.

These sessions covered issues such as the availability of housing, local transport, and how different participants use their existing home and neighbourhood.

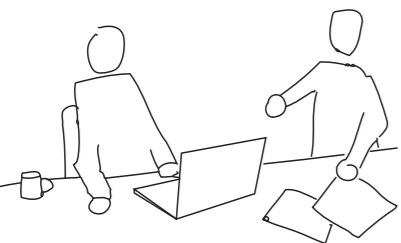


#### INTERVIEWS AND HOME VISITS

Researchers conducted around 35 individual in-depth interviews with older people in their own homes in Sheffield. The conversations included photography and a 'walkabout' through the home which allowed participants to point out or demonstrate specific features and how they were used.



### Developing a design brief



#### 'DOWNSIZING' BRIEF DEVELOPMENT

One group worked from the 'inside-out' to develop the ideal downsizing unit, designing around essential items to be accommodated and the use of spaces. This process demonstrated that older people do not necessarily want to lose out on living space when 'downsizing'.



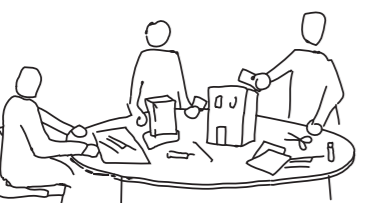
#### GROUP VISITS TO EXISTING HOUSING SCHEMES

The group visited a number of completed housing schemes for older people in order to review existing designs of apartments and housing schemes.

For most participants this was the first time they had ever visited specialist older people's housing and many were not aware of its existence.



### Making proposals



#### DESIGN WORKSHOPS

A series of structured workshops was used to explore issues related to the design of houses and apartment blocks.

These issues included scale and density, privacy and security, and as a group we explored how building design might be used to create a sense of community.



#### SITE VISITS

The group visited two vacant sites in Sheffield to provide a more specific and real-life context for the proposed design work.

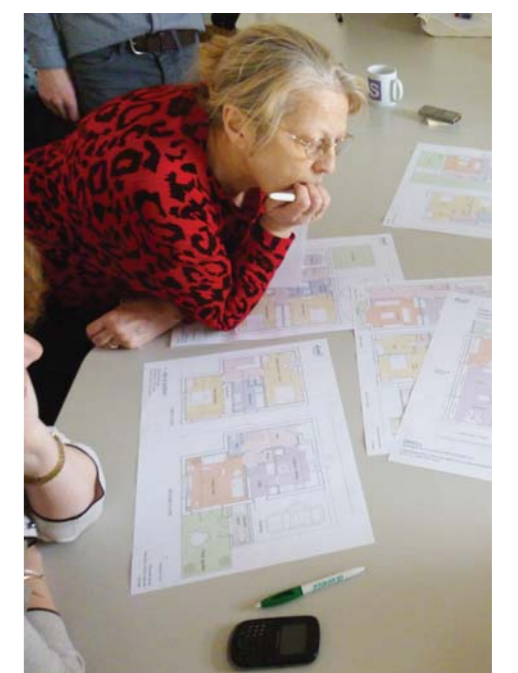
The visits enabled participants to consider the wider connection between housing and the local environment, and which features might introduced to make a site more 'age-friendly'.



#### DESIGN REVIEW

Once a concept had been established, the detailed design process was carried out by designers within the DWELL team.

Two cycles of review sessions were held over a series of meetings and workshops to allow participants to make comments and suggestions that were implemented by the designers.

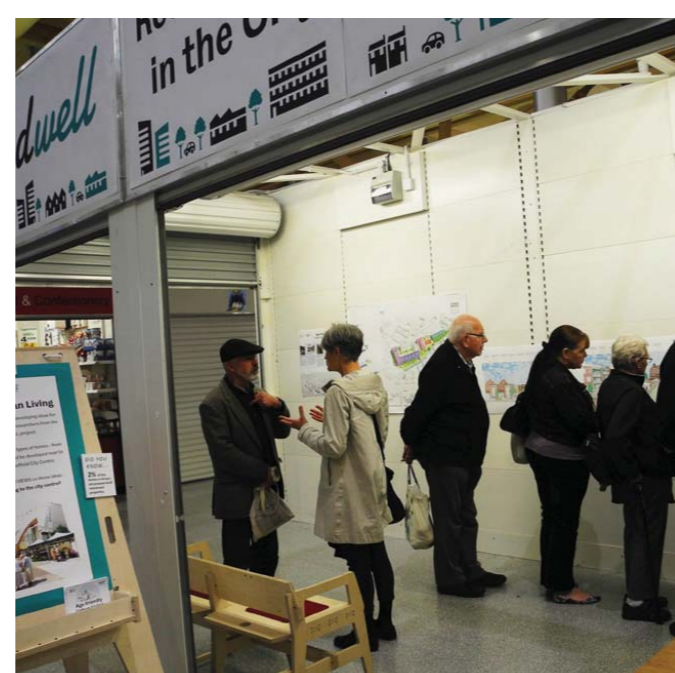


### Presentation and further development



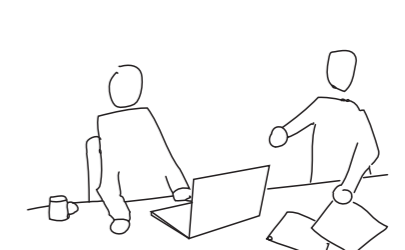
#### PUBLIC EXHIBITION OF GROUP WORK

The group's work on city centre housing was exhibited to the public in the Winter Gardens and in the Moor Market. DWELL team members and participants engaged passers-by in many fruitful and interesting conversations about the potential for city centre living in later life.



#### DEVELOPMENT OF NEW HOUSING TYPOLOGIES

The research team reviewed all of the feedback from participants and the public alongside the latest research and design guidance on age-friendly and accessible housing. This process eventually led to the development of six new housing typologies for downsizers.



#### ANALYSIS + PRESENTATION OF FINDINGS

Over the coming months, the researchers will continue to analyse the data gathered from the interviews, focus groups and workshops. This will include review of the tools and methods used in the participatory design process, which will help to inform future researchers and designers to develop housing with older people.